

The IQ Card-345 can be installed in to “Slot 3” of your IQ Panel 4, IQ4 Hub or IQ4 NS to enable support of approved legacy 345 MHz SRF sensors.

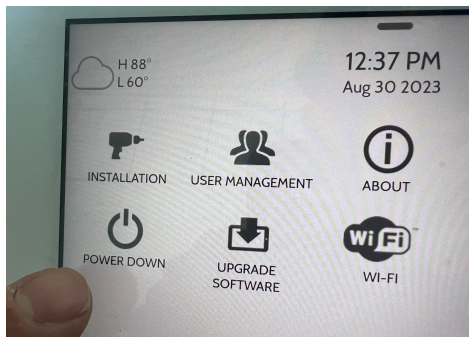
Product Name: IQ Card-345

Part Number: QC0005-840

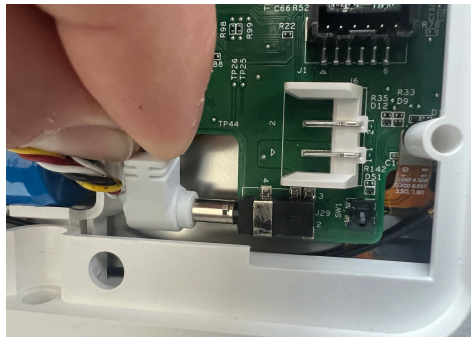
Document last updated on: 8/30/23



BEFORE YOU BEGIN



Swipe down and touch “Settings” then “Advanced Settings”. Enter your code and touch “POWER DOWN”.



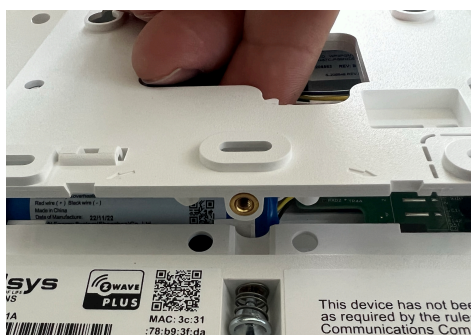
Once the IQ Panel has completely powered down, unplug or disconnect the power by removing the barrel jack connector inside the panel or by unplugging the power supply. **NOTE: it is NOT required to disconnect the battery.**



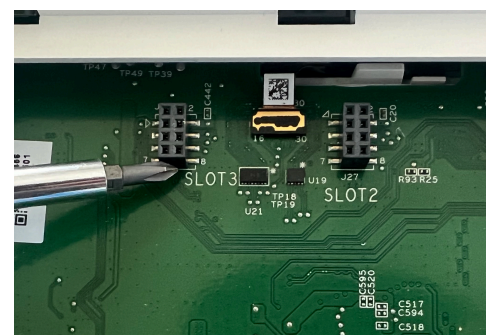
INSTALLING THE CARD



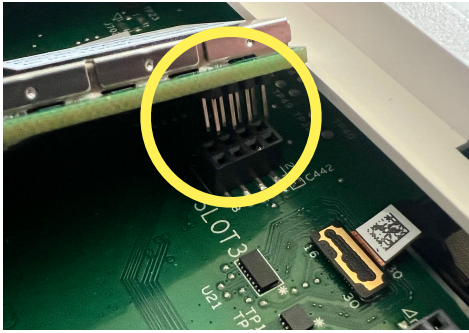
From the bottom of the panel, find the retaining screw, loosen completely.



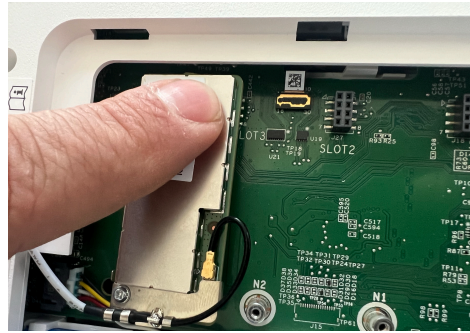
Once the screw has been loosened, pull the backplate away from the panel to remove.



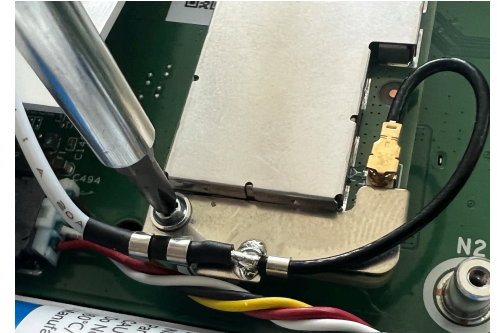
Locate “SLOT 3” which is designated as the slot for SRF daughter cards.



Match the pins on the bottom of the IQ Card to the terminal on the IQ Panel.



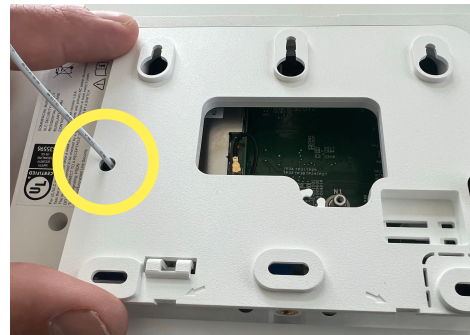
Push the IQ Card firmly into place.



Install and tighten the provided locking screw to secure the IQ Card into place. Ensure the antenna remains connected and does not interfere with the battery.



Replace the back cover, top tabs first.

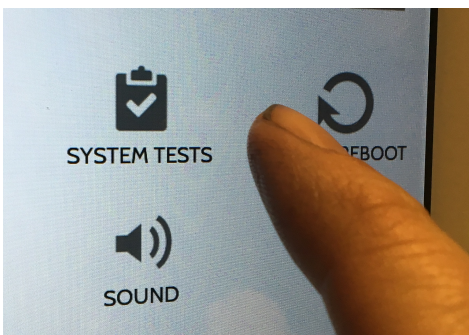


Ensure the white SRF antenna is routed out the hole in the backplate. Press down on the bottom and tighten the retaining screw.

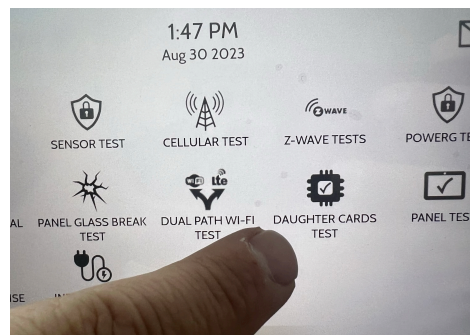


Plug the power supply back in and press and hold the power button for 3 sec to power on.

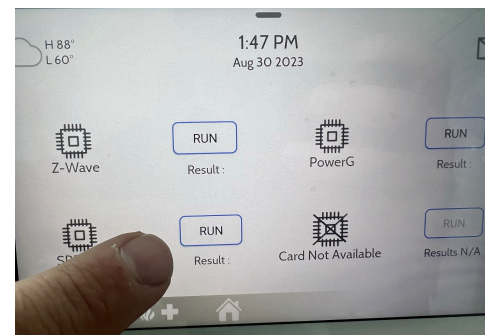
TESTING THE CARD



Swipe down and touch "Settings" then "Advanced Settings". Enter your code and touch "System Tests".



Touch "Daughter Cards Test".



Run the "SRF" test. Allow up to 2 min for the panel to successfully test the radio in the new IQ Card. If test fails, reboot the panel and try again.

The IQ Panel will automatically recognize the newly-installed IQ Card-345 and it is now ready to use.